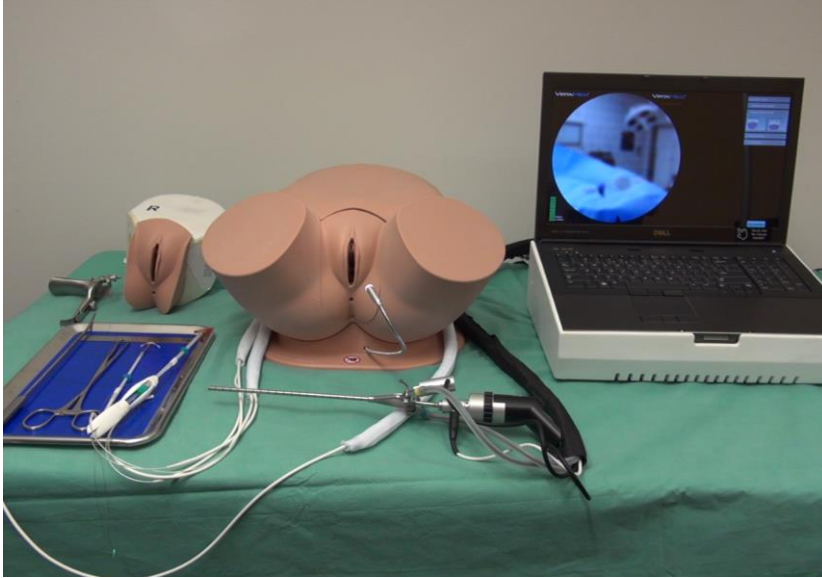




VIRTAMED PELVICSIM™ – TRAINING FOR IUD PLACEMENT AND HYSTEROSCOPY



OB/GYN training with **original IUDs and scope**, in a virtual environment with **no risk for live patients**: That is what PelvicSim™ offers. It is more than just a new platform for HystSim™ and EssureSim™: **It is the first virtual reality simulator for uterine sounding and IUD insertion.**

Virtual patients on PelvicSim™ include **anteverted and retroverted uterine cavities**. The version and flexion of the uterus can be straightened with a tenaculum forceps. Ghost tools show the correct movement, and a **patient comfort scale** gives the doctor feedback on how comfortable the patient feels.

VirtaMed® Platform with Original Instruments

- Adapted, **original diagnostic hysteroscope with tracked working channel and/or original resectoscope** provide a complete simulation experience and facilitate familiarization with instruments. As in real life, the scopes feature:
 - In- and outlet valves for **fluid handling**
 - **3 cameras**: 0°, 12° and 30° with focus wheel
 - **Working channel** for therapeutic cases
 - Working element for **electro surgery**
- Adapted and tracked **micro-grasper/scissors**
- Adapted and **tracked IUDs** (Mirena® and/or ParaGard®)
- Adapted and **tracked Essure® handle**
- Anatomic pelvic model with magnetic tracking
- Speculum and Tenaculum
- **High-end touch-screen notebook**, mouse
- Wheel-based carrying case for easy and safe transportation

Training Software

VirtaMed PelvicSim™ training software

- 2 virtual patients for uterine sounding
- 4 virtual patients for Mirena® placement
- 4 virtual patients for ParaGard® placement

VirtaMed HystSim™ training software

- 12 virtual patients for diagnostic procedures
- 8 virtual patients for polyp removal
- 8 virtual patients for myomectomy
- 4 virtual patients for endometrium ablation
- 4 virtual patients for advanced hysteroscopy

VirtaMed Essential Skills (add-on to PelvicSim™)

- 10 virtual patients for the training of essential hysteroscopy skills

VirtaMed EssureSim™ (add-on to PelvicSim™)

- 8 virtual patients for Essure® with rising difficulty

Would you like to know about **upcoming demo opportunities and the newest VirtaMed products**?

Please visit us online on www.virtamed.com or scan the mobile tag on the right for more information.

VIRTUAL PATIENTS FOR MANIFOLD AND RISK-FREE OB/GYN TRAINING



VirtaMed PelvicSim™

10 virtual patients include **uterine sounding in anteverted or retroverted patient** cases and the **guided or blind placement of intra-uterine devices** such as Mirena® or ParaGard®, also in anteverted or retroverted uteri.

Learning goals include to safely sound a uterus and establish the correct size as well as **correctly placing an IUD with or without visual guidance** during the procedure.



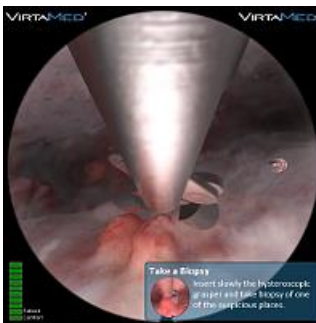
VirtaMed HystSim™

36 virtual patient cases for **diagnostic hysteroscopy, polypectomy, myomectomy, endometrium ablation** with the rollerball and **advanced hysteroscopy**. Varying pathologies and cases with different levels of difficulty allow the trainee to gain experience in using the angled optics and do the first steps in operative hysteroscopy.

The trainee has to establish **uterine distension** and **clear viewing conditions**, inspect the uterine cavity completely and describe visible pathologies. Learning objectives include the **safe handling of loop electrode, hook or rollerball** and the targeted **coagulation of bleeding sources**.

Advanced hysteroscopy cases include **synechiae, uterine septum** and challenging **fibroids (type 0, I and II)**. Learnings include removing the intramural parts of fibroids and re-establishing a uterine cavity without perforating with the resection tool.

Expert-defined metrics provide an objective feedback for best learning results.



VirtaMed Essential Hysteroscopy Skills

10 virtual patients include the **correct access** when inserting a 30 degree scope in different uteri (anteverted or retroverted), **taking a proper biopsy** with the forceps and **removing small polyps with the grasper or micro scissors**.

Learnings include mastering the trade-off between good **flow for a clear view** and **adequate distention**. Also navigation and visualizing the landmarks can be trained.



Hysteroscopic Sterilization with Essure® devices

8 cases include **anteverted and retroverted uteri** as well as **various ostia configurations**. Complications such as distention difficulties, false passages and tubal resistance can be practiced **without patient involvement**.

Learnings include to **assess both tubal orifices for visibility and patency**, advance the Essure® micro-insert slowly and steadily into the fallopian tube and correctly deploy it.